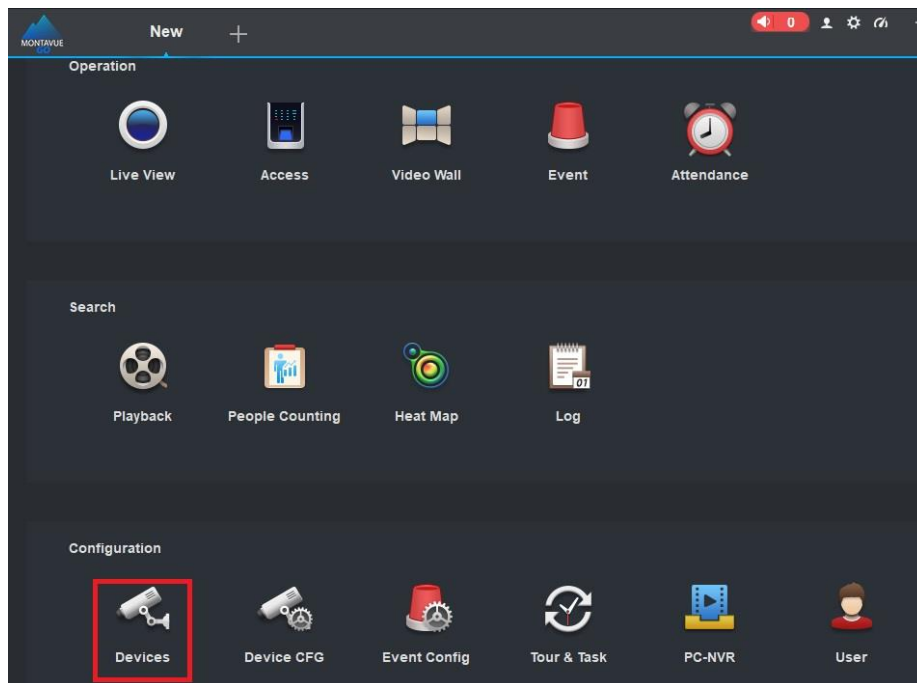


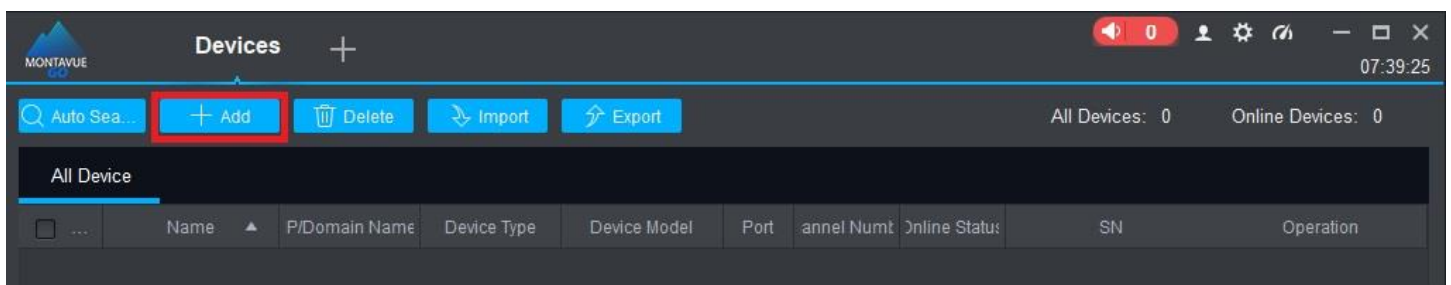


How to Add the NVR to MontavueGo Desktop

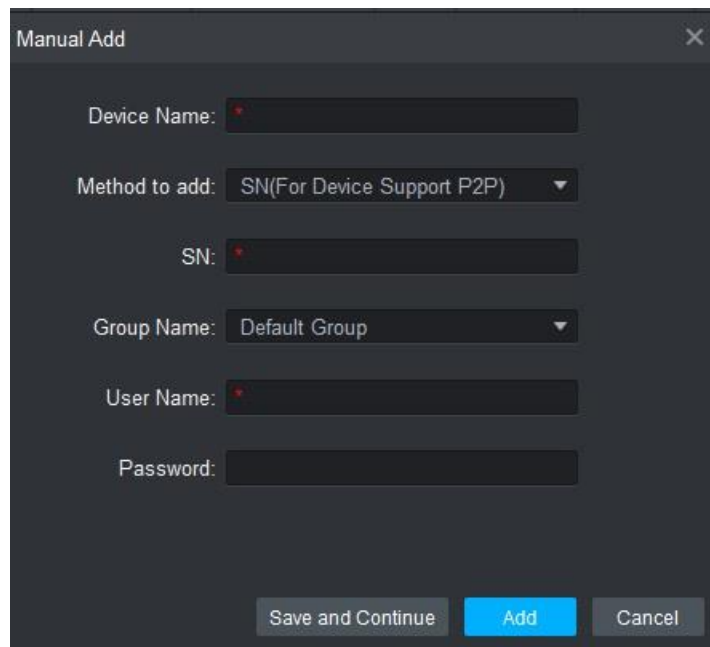
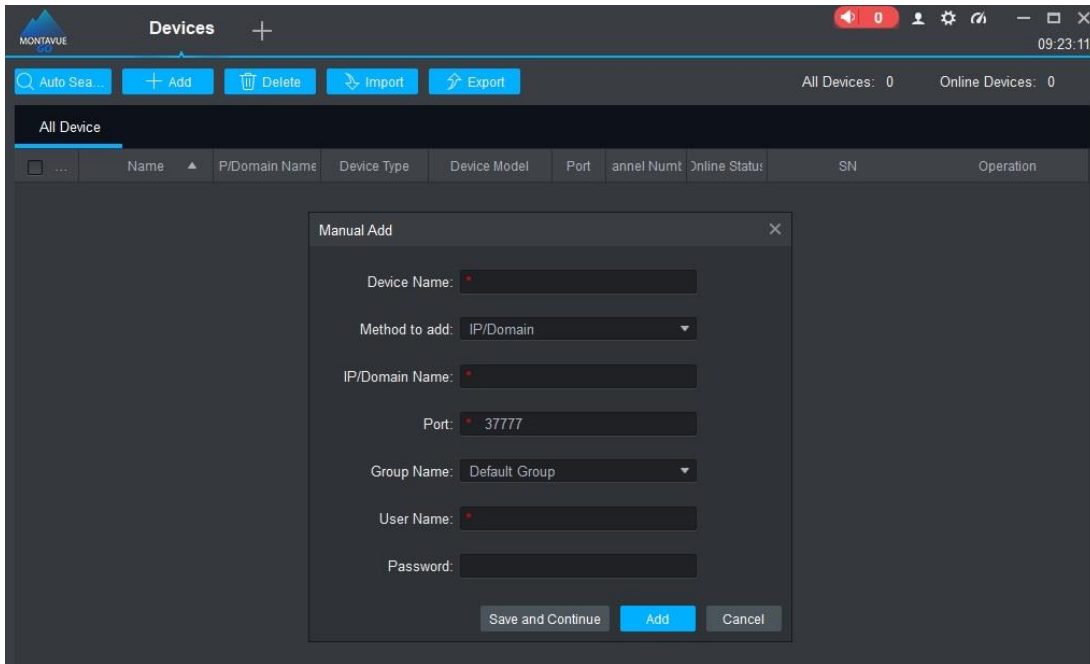
1. Navigate to a New Tab> Under Configuration click on Devices



2. On the next page, you will select the + **Add** Button at the top left



3. On the Manual Add Window Navigate to Method to Add > Select IP/Domain to prompt a list to then select **SN(For Device Support P2P)**



4. You will then put in a Device Name (Company). Then put in the Serial Number of the NVR under **SN** (Provided by Flex Networks). Next Username is typically admin and then you will put in the **Password** (Provided by Flex Networks), then you will hit the blue **Save and Continue** Button.

The screenshot displays the Montavue 'Devices' management screen. At the top, there are navigation buttons: 'Auto Search', '+ Add', 'Delete', 'Import', and 'Export'. On the right, it shows 'All Devices: 1' and 'Online Devices: 1'. Below the buttons, there are two tabs: 'All Device' (selected) and 'Encode Device'. The main content is a table with the following data:

<input checked="" type="checkbox"/>	No.	Name	P/Domain Name	Device Type	Device Model	Port	annel Numt	Online Status	SN	Operation
<input checked="" type="checkbox"/>	1	wscp camera	8E04526PA...	NVR	MNR12640	N/A	64/0/16/6	● Online	8E04526PAZBD6CF	

5. You should then see that the NVR will populate on the **Devices** screen, where it will try to connect to the NVR and if it is successful it will show **Online**